

- MATERIAL SPECIFICATIONS:**
- 1. ALUM. HEAVY HEX NUT
 - 2. ALUM. HEAVY HEX BOLT
 - 3. ALUM. ANCHOR ROD
 - 4. ALUM. PLATE
 - 5. ALUM. PLATE
 - 6. ALUM. PLATE
 - 7. ALUM. PLATE
 - 8. ALUM. PLATE
 - 9. ALUM. PLATE
 - 10. ALUM. PLATE
 - 11. ALUM. PLATE
 - 12. ALUM. PLATE
 - 13. ALUM. PLATE
 - 14. ALUM. PLATE
 - 15. ALUM. PLATE
 - 16. ALUM. PLATE
 - 17. ALUM. PLATE
 - 18. ALUM. PLATE
 - 19. ALUM. PLATE
 - 20. ALUM. PLATE

L. B. FOSTER COMPANY
 1016 GREENTREE ROAD
 PITTSBURGH, PA. 15220

BRIDGE RAIL SYSTEM FOR:

NEW JERSEY

STYLE:

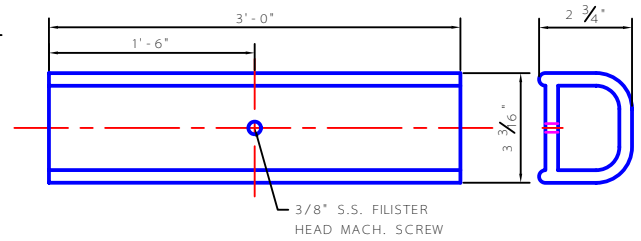
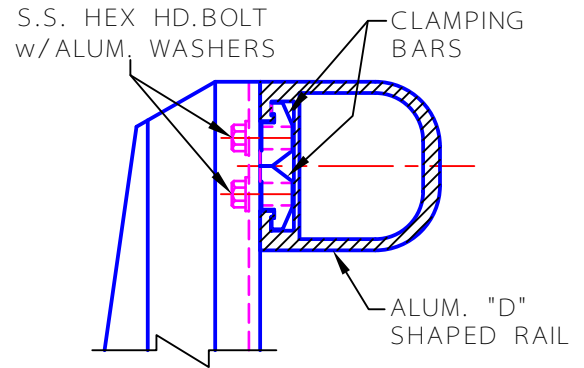
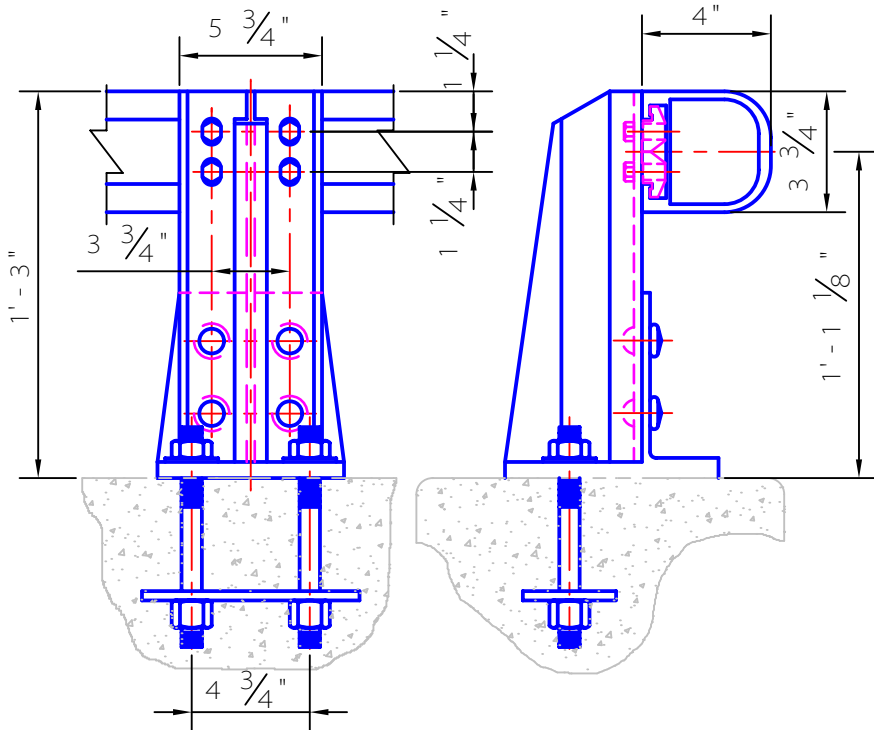
FABRICATED

TYPE:

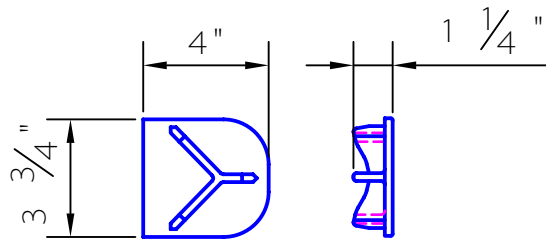
1 - LINE

MATERIAL:

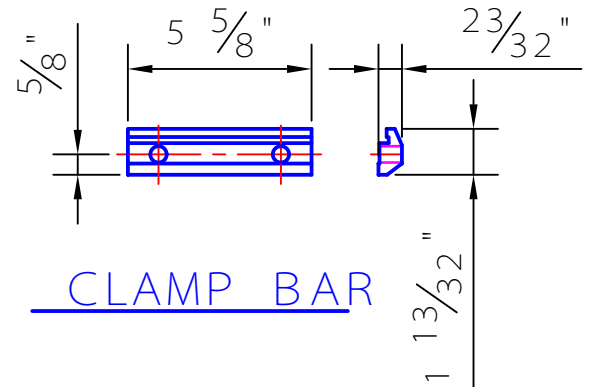
ALUMINUM



RAIL SPLICE



RAIL END CAP



CLAMP BAR

MATERIAL SPECIFICATIONS:

RAILS, POSTS, BASES, SPLICES AND CLAMP BARS:

ALUMINUM A.S.T.M. B221, ALLOY 6061-T6

RIVETS:

ALUMINUM B316, ALLOY 6061-T6, BUTTON HD.,
 CONE PT.

FILISTER HD. MACH. SCREWS:

A.S.T.M. 193, GR/ 18 - 8

CLAMP BAR BOLTS:

A.S.T.M. F593, TYPE 304

ALUMINUM WASHERS:

A.S.T.M. B209, 2024-T3

STEEL ANCHOR RODS:

A.S.T.M. A276, TYPE 304 or 430, ANNEALED

ALUMINUM TOP NUTS:

A.S.T.M. B211, 6061-T6

STEEL HEX NUTS:

A.S.T.M. A563, GRADE C or BETTER

ALUMINUM END CAPS:

A.S.T.M. B26, 356-F

S.S. ANCHOR ROD
 w/ALUM. WASHER &
 ALUM. HEAVY HEX NUT

3/4"Ø ALUM.
 RIVETS

ALUM. POST

ALUM. BASE

